

PART OF THE SW. 1/4, OF SECTION 33, T.7N., R.1E., S.L.B. & M.

421

HIDDEN BROOK ESTATES

IN WEBER COUNTY

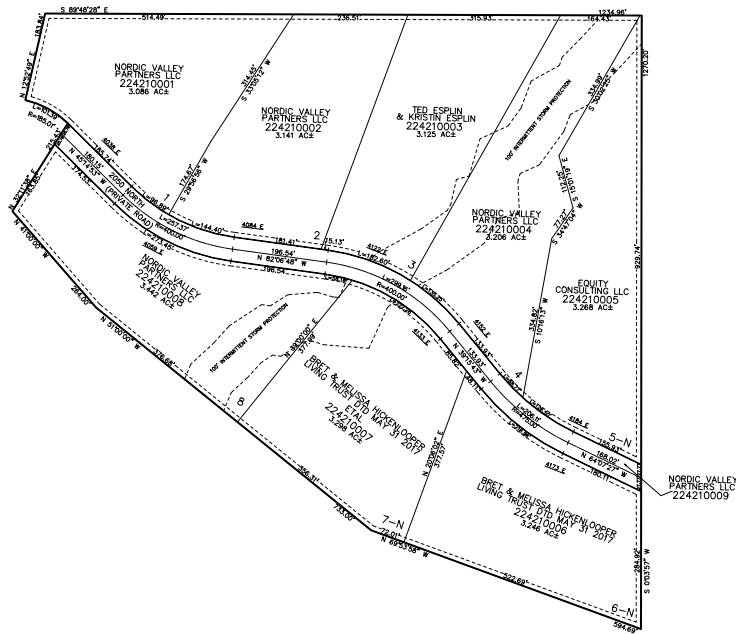
TAXING UNIT: 28

SCALE 1" = 200'

SEE PAGE 40

SEE PAGE 40

SEE PAGE 40



SEE PAGE 40

10' UTILITY & DRAINAGE EASEMENTS EACH
SIDE OF PROPERTY LINES AS INDICATED
BY DASHED LINES EXCEPT AS OTHERWISE
SHOWN.

FOR COMPLETE SURVEY DATA SEE
ORIGINAL DEDICATION PLAT IN
BOOK 96, PAGE 57-58 OF RECORDS.